



KAUA'I CLIMATE ADAPTATION PLAN

Wildfire

How do wildfires affect Kaua'i?

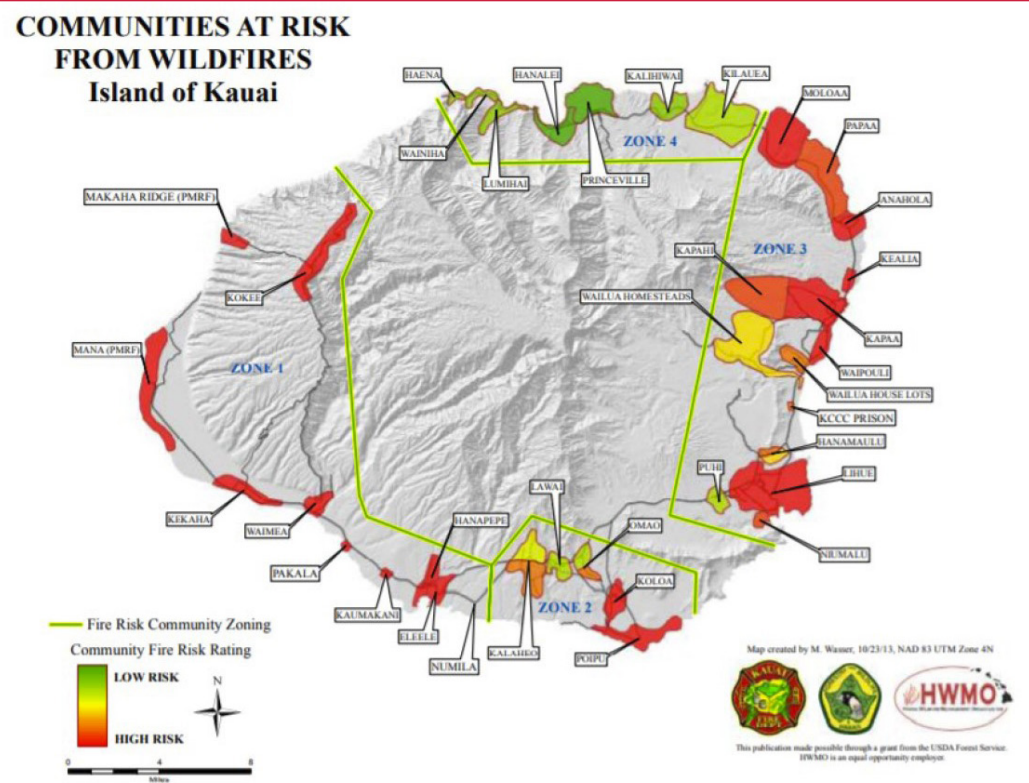
Wildfire is a growing problem in Kaua'i related to changes in rainfall and temperature, invasive grasses, and human ignition. Total burned area statewide has increased more than fourfold in the last century and fire propagates rapidly in dry nonnative grasslands.¹

The Wildland Urban Interface (WUI)—the zone where development and vegetated areas are next to each other—has the highest potential for damage to life and property. Areas at risk of wildfire are categorized into Medium and High risk in the Communities at Risk from Wildfire (CARW) maps from the Hawaii Wildfire Management Organization. The rating takes into account subdivision, vegetation, building, and environmental characteristics as well as fire protection capability.

1. Trauernicht, C., E. et al. 2015 The contemporary scale and context of wildfire in Hawaii. Pacific Science 69:427-444



Wildfire



Wildfire (US Forest Survey)



Destroyed homes (US DoD)

Projected Changes and Related Impacts

Projected Change

- Increased frequency and size of wildfires related to drought and unmanaged vegetation (including invasive grasses) that act as tinder and fuel

Related Impacts

- Increased landslide risk in burn scar areas during storms
- Increased sediment carried from upland to nearshore coastal areas due to soil erosion
- Reduced air quality from smoke and dust



Invasive Giant Reed (Arundo Donax)

Key Vulnerabilities



Over 53,000 people and 330 critical facilities exposed to medium and high wildfire risk²

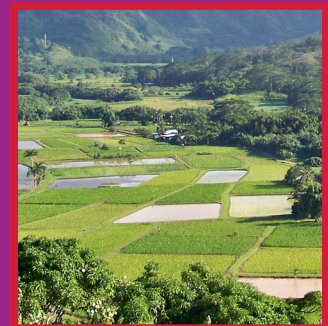
2. County of Kauai. (2021). County of Kauai Multi-Hazard Mitigation and Resilience Plan



Keiki, kupuna, and people with underlying health conditions (like asthma and heart disease)



Native habitat, flora, and fauna



Agriculture and the food system

How can I get involved?

- Attend an Open House
- Attend a Deep Dive session
- Share a story on the website
- Participate in an online survey
- Contact the Planning Department

Get in Touch

For more information on the Kaua'i Climate Adaptation Plan visit kauaiadaptation.com or scan the code below with your phone.

plankauai@kauai.gov

(808) 241-4050



@plankauai



@kauaiplanning

